

The complete production solution
Your future – All from one source



Single and Twin Head Corner Cleaning

Corners cleaned to perfection



SMI-4AS-JC

Single Point CNC Corner Cleaner



SMI-4AS-JC Single Point CNC Corner Cleaner

The Stürtz Model SMI-4AS-JC Single Point CNC Corner Cleaner is a fully programmable, CNC controlled machine for cleaning frame or sash profiles. This cleaner features high speed precision via four (4) independently controlled axes.

This machine cleans one corner per cycle on profiles measuring as small as 1" tall up to 7" tall. A low friction manual rotation support table is standard with this cleaner.

Eight (8) standard cleaning tools include top and bottom horizontal and vertical scarf knives, top and bottom vertical drill units, a bottom horizontal routing unit for internal pockets and a fully programmable saw blade for cleaning exterior contours. In addition to these standard tools, optional custom tools are available for cleaning unique profiles. Linear and Circular Interpolation software allows for consistent cleaning of internal and external radius surfaces.

The SMI-4AS-JC is a versatile cleaner with tabletops and backfences prepared for lift handles, interlocks, nailing fins and stucco flanges. The wide clamping range allows processing of all types of frame and sash profiles without modification. Profile recognition of up to 200 different profiles provides great flexibility. Simple, visual programming makes it quick and easy to add or modify cleaning programs in the field.

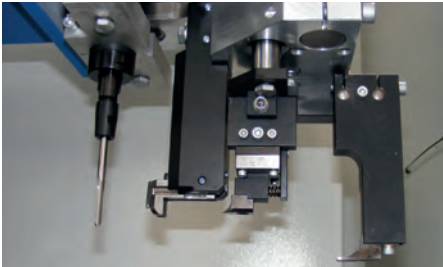
An optional automatic rotation station is available to allow configuration of the cleaner in an automated welding and cleaning line. This provides the ability to network the cleaner to the welder and, with the addition of an automatic unload system, transfer welded squares from the welder through the corner cleaner without operator intervention.

As with all Stürtz equipment, the cleaner is designed with ease of operation and maintenance as a primary goal.

Four axes control (interior view)



Standard upper tool head



Standard pull-in and backfence configuration



Machine Specifications

Main Standard Features

- » State-of-the-art control technology
- » Windows based PC interface
- » On screen graphical programming
- » Profile recognition capability for over 200 frame or sash profiles
- » Cleans profiles from 1" up to 7" tall
- » Manual rotation table

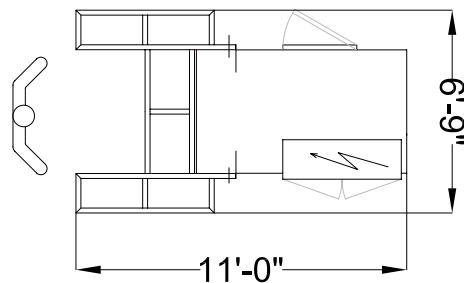
Technical Data

Max. Profile Width	3.6"
Profile Height Min./Max.	1.0" / 7.0"
Compressed Air Supply	7 Bar
Power Supply	220/440 Volts, 3 Phase, 60 Hertz
Weight	2,750 lbs.
Length x Width x Height	132" x 81" x 84"

Options

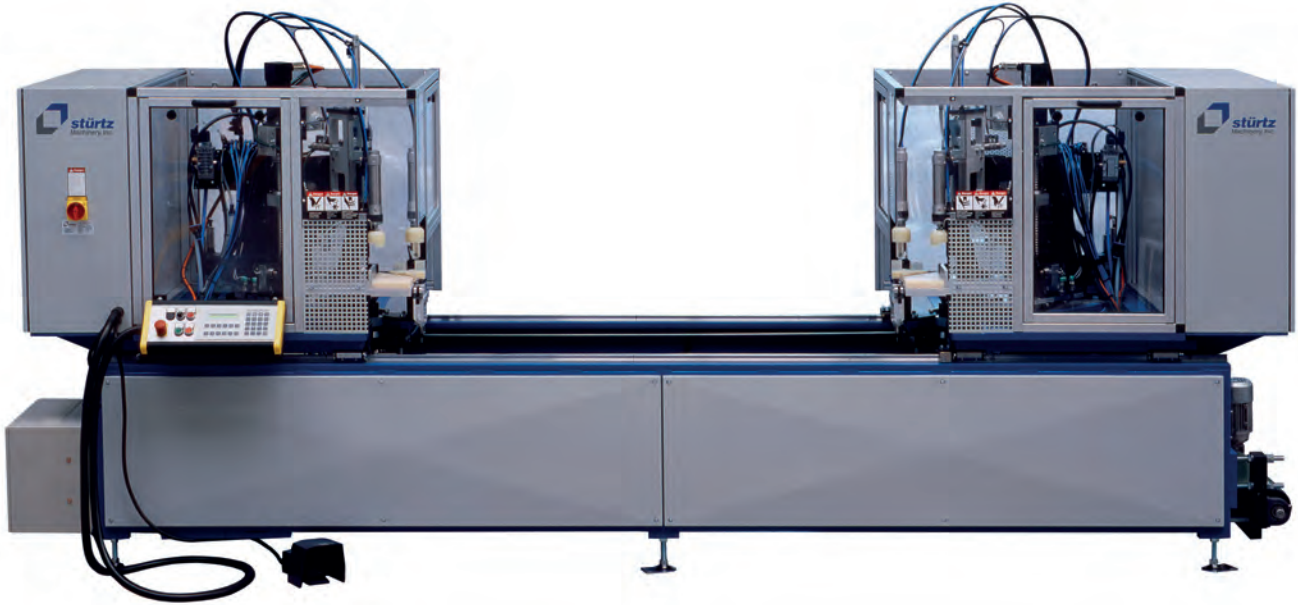
- » Barcode scanner
- » Network communication with a Stürtz Welder
- » Custom cleaning tools for bevels and radii
- » Rotating pull-in for sloped sill frames
- » Automatic rotation station

Machine Footprint



SMI-CNC-2K-18

Twin Head CNC Sash Corner Cleaner



SMI-CNC-2K-18 Twin Head CNC Sash Corner Cleaner

The Stürtz Model SMI-CNC-2K-18 Twin Head CNC Sash Corner Cleaner has two fully programmable, CNC controlled cleaning heads with two programmable axes per head.

This machine cleans two corners per cycle on sizes from 11.5" wide up to 72" wide. Smaller squares can be cleaned one corner at a time. Dedicated for sash cleaning, the machine will accept profiles up to 3" tall x 2.5" wide.

Standard tools include top and bottom horizontal scarf knives, a vertical drill unit from the top for cleaning the glass leg or accessory grooves and a programmable saw blade for exterior contour cleaning. Optional custom tools are available to meet additional cleaning requirements.

In addition to the standard cleaning functions, the SMI-SNC-2K-18 offers the ability to add optional fabrication to the cleaning cycle. Custom applications include routing, drilling and dimpling tools for tilt latches, pivot bars, lock and keeper locations, weep slots and night latch slots. An optional glass leg scarf knife is available in place of the standard drill unit.

As with all Stürtz equipment, the cleaner is designed with ease of operation and maintenance as a primary goal. A full width scrap conveyor belt is available as an option on this machine. This belt is located at floor level to bring chips and vinyl dust out of the machine where it can be easily and quickly cleaned up without interrupting the machine cycle.

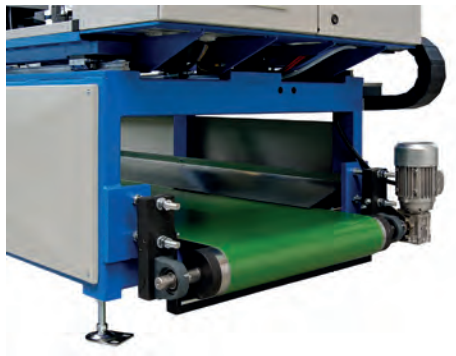
Simple two line operator interface



Standard tool configuration



Optional scrap belt



Machine Specifications

Main Standard Features

- » Cleans up to 72" sashes
- » Cleans profiles up to 3" tall
- » Jog function for movable head
- » Automatic profile recognition
- » Manual rotation table

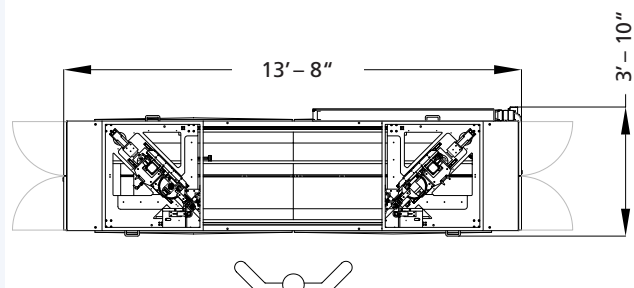
Technical Data

Sash Size Min./Max.	11.5" x 11.5" / 72" x 72"
Maximum Profile Width	2.5"
Profile Height Min./Max.	1.0" / 3.0"
Compressed Air Supply	7 Bar
Power Supply	220/440 Volts, 3 Phase, 60 Hertz
Weight	3,300 lbs.
Length x Width x Height	164" x 46" x 72"

Options

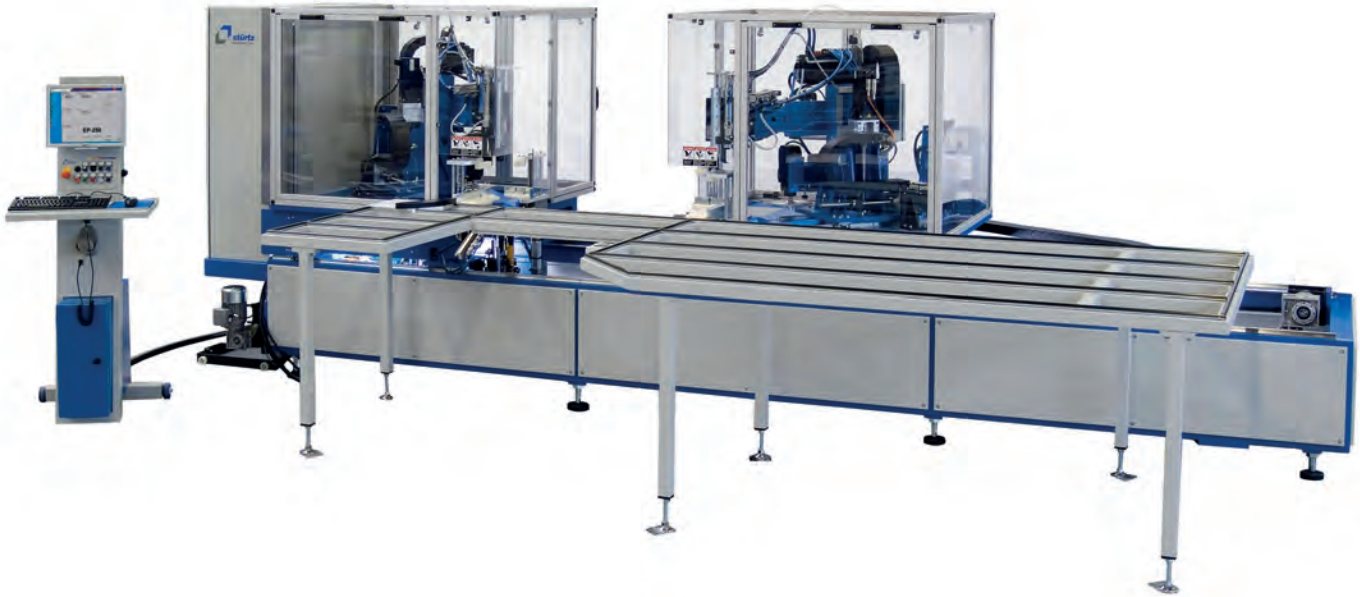
- » Positioning upgrade for movable head
- » Barcode scanner
- » Tilt latch routing
- » Pivot bar drilling
- » Custom fabrication
- » Dust removal belt

Machine Footprint



SMI-CNC-2K-30F

Twin Head Frame Corner Cleaner



SMI-CNC-2K-30F Twin Head Frame Corner Cleaner

The Stürtz Model SMI-CNC-2K-30-F Twin Head Frame Corner Cleaning Machine has two fully programmable, CNC controlled cleaning heads. The standard cleaner incorporates two programmable axes per head.

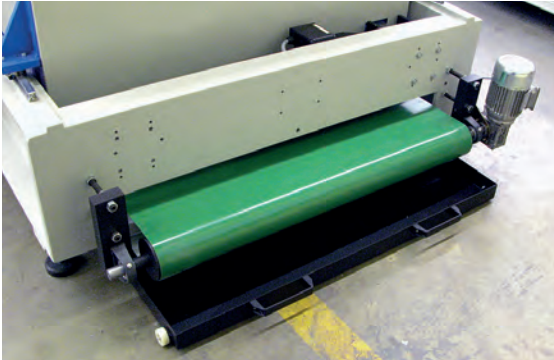
The machine will clean two corners per cycle on sizes from 16.5" wide up to 120" wide. Smaller squares can be cleaned one corner at a time. Even small squares starting at 12" x 12" may be cleaned by single-head operation. This large capacity cleaner will also handle profiles up to 7" tall with no modifications to our standard design.

Though designed for frame capacity, the CNC-2K-30-F can be purchased with integral tilt latch routing and pivot bar drilling for sash applications.

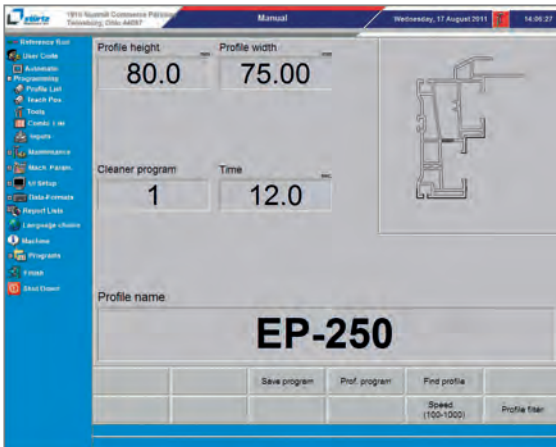
Each head houses up to 9 modular mounted cleaning tools. Linear and circular interpolation using our "Motion Control" hardware and software allow cleaning of curved patterns. The machine is equipped with the new Stürtz user interface including the smart visual "Teach-In" screens.

As with all Stürtz equipment, the new cleaner is designed with ease of operation and maintenance as a primary goal. A full width scrap conveyor belt is standard on this machine. This belt is located at floor level to bring chips and vinyl dust out of the machine where it can be easily and quickly cleaned up without interrupting the machine cycle.

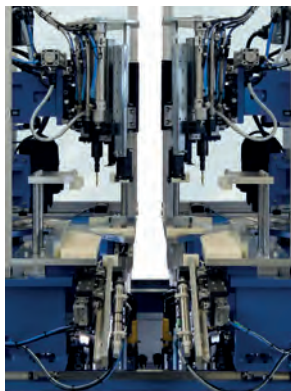
Standard chip conveyor



Standard interface with graphical on-screen programming



Cleaning heads at minimum open position



Machine Specifications

Main Standard Features

- » Cleans up to 120" frames
- » Cleans profiles up to 7" tall
- » Up to 9 cleaning tools per head
- » PC monitor system Windows based
- » Capable of cleaning curved patterns
- » Jog function for movable head
- » Automatic profile recognition of over 200 profiles
- » Exclusive self cleaning belt system
- » Manual rotation table

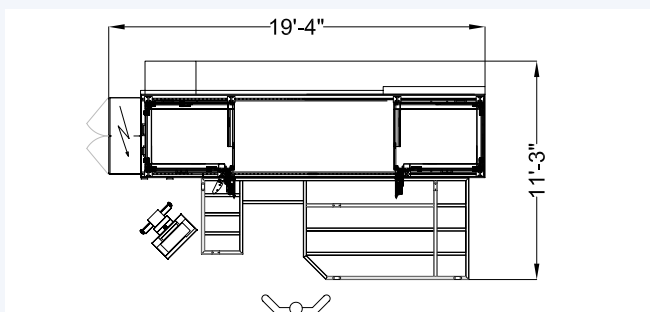
Technical Data

Frame Size Min./Max.	16.5" x 16.5" / 120" x 120"
Maximum Profile Width	3.6"
Profile Height Min./Max.	1.0" / 7.0"
Compressed Air Supply	7 Bar
Power Supply	220/440 Volts, 3 Phase, 60 Hertz
Weight	11,000 lbs.
Length x Width x Height	232" x 135" x 89"

Options

- » Positioning upgrade for movable head
- » Barcode scanner
- » Tilt latch routing
- » Pivot bar drilling

Machine Footprint

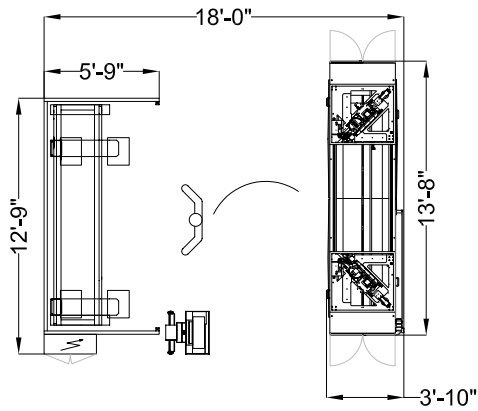


Welding / Cleaning Lines

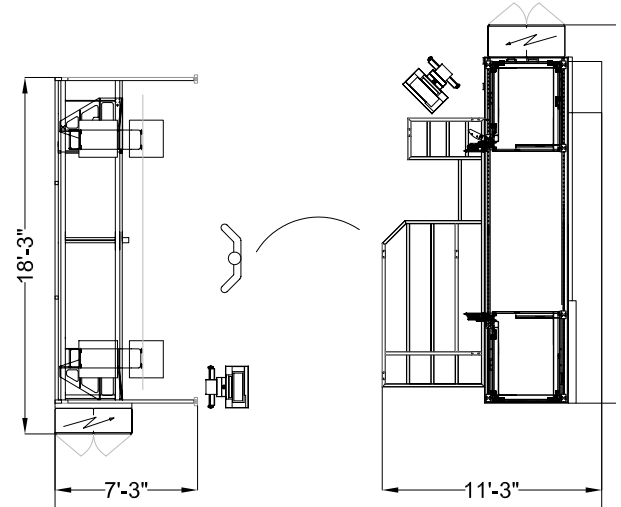
Productive and space saving all along the line

Sample Configurations

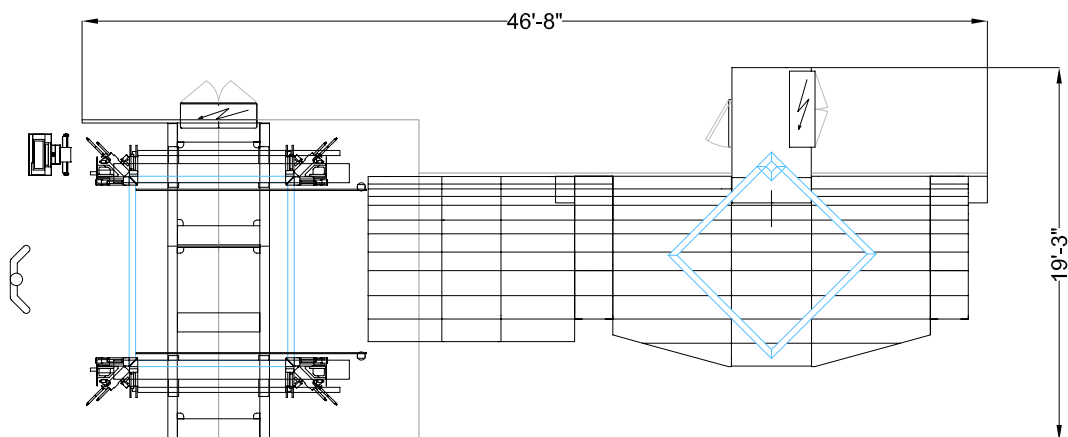
Sash Working Cell



Frame Working Cell



Horizontal Double Stack Line



Stürtz Machinery, Inc.
1910 Summit Commerce Park
Twinsburg, Ohio 44087 – USA

Phone 330 405 0444
Fax 330 405 0445
info@sturtz.com

www.sturtz.com